

# Live • Work • Play

Central NJ's Premiere Re-Development

## NOW LEASING BUILDING 110

21-71 Clark Center, Trenton, NJ 08611



**ROEBLING  
CENTER**

**Office Suites  
For Lease**

**Suite 50: 2,840 SF  
Suite 51: 4,905 SF  
Suite 100: 2,858 SF  
Suite 101: 4,794 SF**

Building 110 delivers stunning space that attracts hard-to-recruit millennial knowledge workers. It provides extraordinary architecture, sustainable design, and live-work potential with Roebling Lofts now open on campus. Located on a 7.1 acre site immediately surrounded by Trenton's dynamic Chambersburg neighborhood.

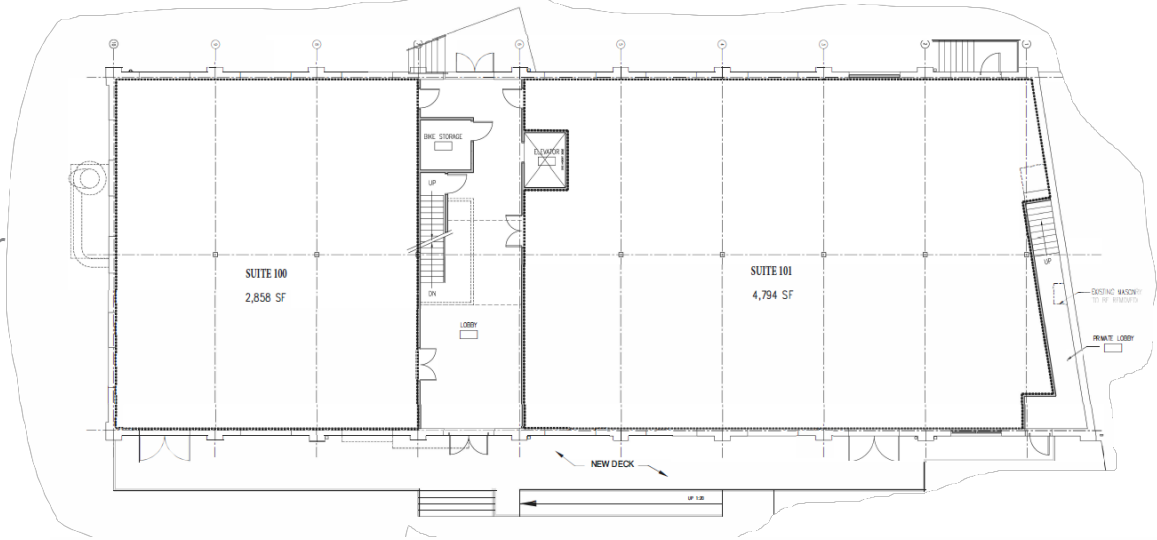


Roby Bull  
+1 908-334-2109  
[Roby.bull@am.jll.com](mailto:Roby.bull@am.jll.com)

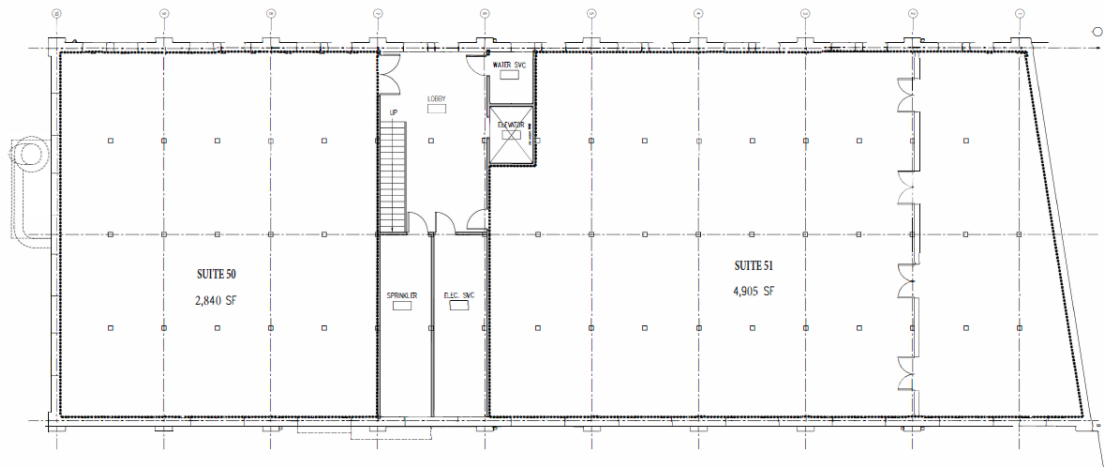
Exclusively developed by:  
Hx2 Development Associates, LLC.

# Floor Plans

First Floor



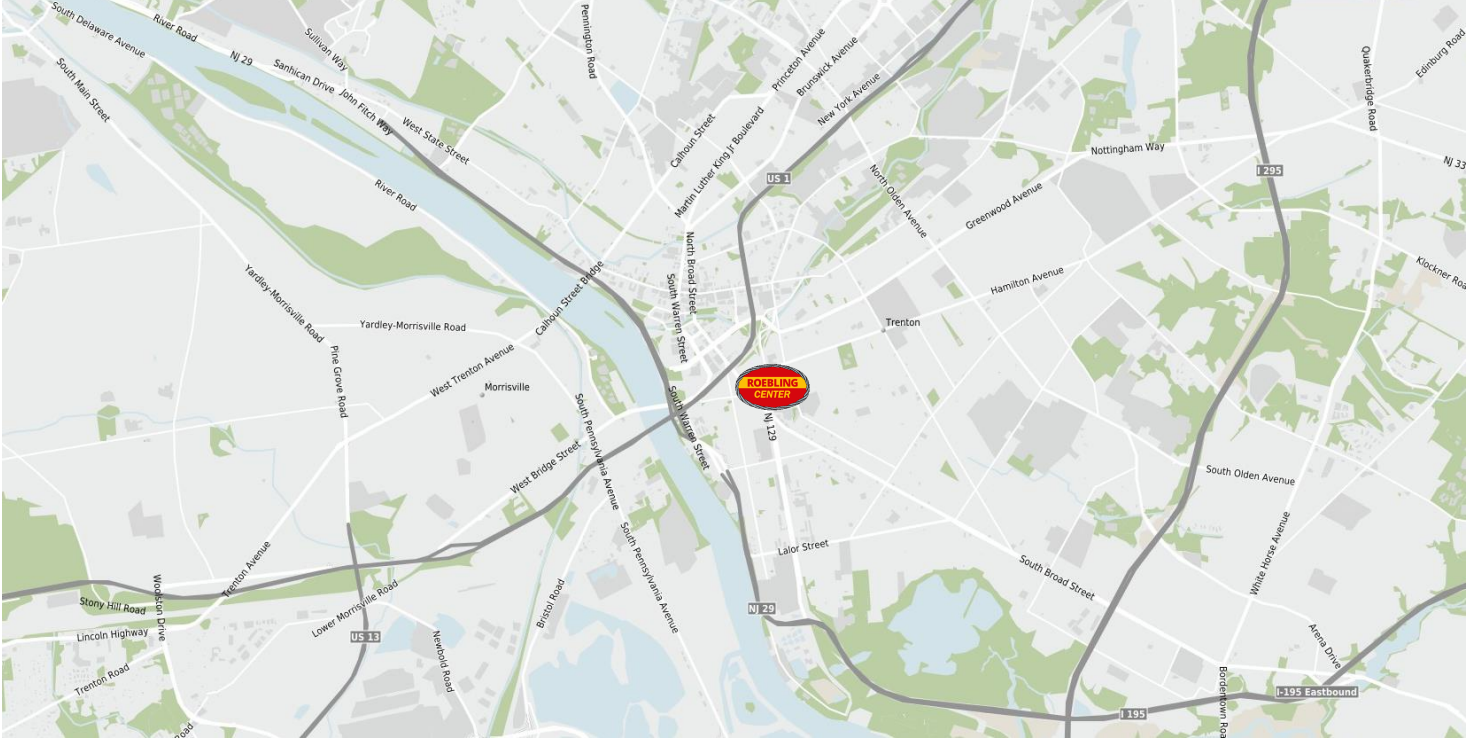
Lower Level



Building 110 is the oldest structure in Roebling Center, originally the carpentry shop for the factory complex. Its wood post-and-beam construction lends itself to a number of gracious renovation options.







## Easy Access

Adjacent to the River Line light rail station and directly across from Route 129. Immediate access to major roads like Route 1, I-195, I-295 and the NJ Turnpike. It offers 1-stop connections to the Trenton Transit Center, service to Newark Airport, NYC and Philadelphia. Walking distance to restaurants, supermarket and other retail amenities.

### ◎ HEALTH & SAFETY FEATURES

- Daylit, naturally cross-ventilated office suites
- Touch-less hand washing
- Operable windows throughout
- High bay space—lots of air volume
- Separate ventilation systems for each office suite
- Direct exterior entrances to each office suite
- Outdoor deck with tables and chairs for lunch and meetings

### ◎ GREEN FEATURES

- Water saving fixtures
- LED lighting
- Energy-efficient HVAC
- Low or no-VOC finishes
- Electric car charging stations

# CENTRAL NJ'S PREMIERE LIVE•WORK•PLAY DEVELOPMENT

Building 110



[www.roeblingcenter.com](http://www.roeblingcenter.com)



Roby Bull

+1 908-334-2109

[Roby.bull@am.jll.com](mailto:Roby.bull@am.jll.com)

Exclusively developed by:

Hx2 Development Associates, LLC.

Jones Lang LaSalle

© 2020 Jones Lang LaSalle IP, Inc. All rights reserved. The information contained in this document is proprietary to Jones Lang LaSalle and shall be used solely for the purposes of evaluating this proposal. All such documentation and information remains the property of Jones Lang LaSalle and shall be kept confidential. Reproduction of any part of this document is authorized only to the extent necessary for its evaluation. It is not to be shown to any third party without the prior written authorization of Jones Lang LaSalle. All information contained herein is from sources deemed reliable; however, no representation or warranty is made as to the accuracy thereof.